

FAMILIES OF PARISHES UPDATE

- Corpus Christi is a member of Central Region Trinity Vicariate Family 1
- Also known as CTV-1
- Our Family includes St. Mary's, St. Scholastica, Presentation/Our Lady of Victory, St. Juan Diego and Ss. Peter and Paul.
- Our family is in Wave 1 of the Families of Parishes initiative and will officially become a family on July 1, 2021.

“A Family of Parishes is a grouping of three or more parishes that collaborate in deeper and more intentional ways than parishes have ever done before. Each parish in a Family will retain its own unique identity, similar to how each sibling has his or her own unique role in the family. This is not a parish cluster or merger as we have done in the past. Rather, Families of Parishes share similarities to other models that have been successfully implemented in other dioceses in the United States and Canada, with new parish structures to support mission.

... The structures we inherited for our parishes served us well in the past, but we know from Synod '16 — and it was confirmed by the Vatican document discussed earlier in this section — that parishes need to be realigned for mission. These new Families of Parishes will collaborate by sharing resources — including priests, deacons, and staffs across parish lines — to further advance the mission Christ has entrusted to his Church.”

-Abp. Vigneron, “Led by the Spirit on Mission”

ORGANIZATION STRUCTURE: FAMILY PRIESTS LEAD THE FAMILY

Family Priests

Moderator

Family-Pastor

Family-Pastor

Family-Pastor

IMPLICATIONS OF *IN SOLIDUM* MODEL

- No one priest is pastor of any particular parish in the Family
- They are all pastors of all parishes

TOTAL FAMILY CLERGY



TWO KEY DISTINCTIONS IN THE NEW STRUCTURE

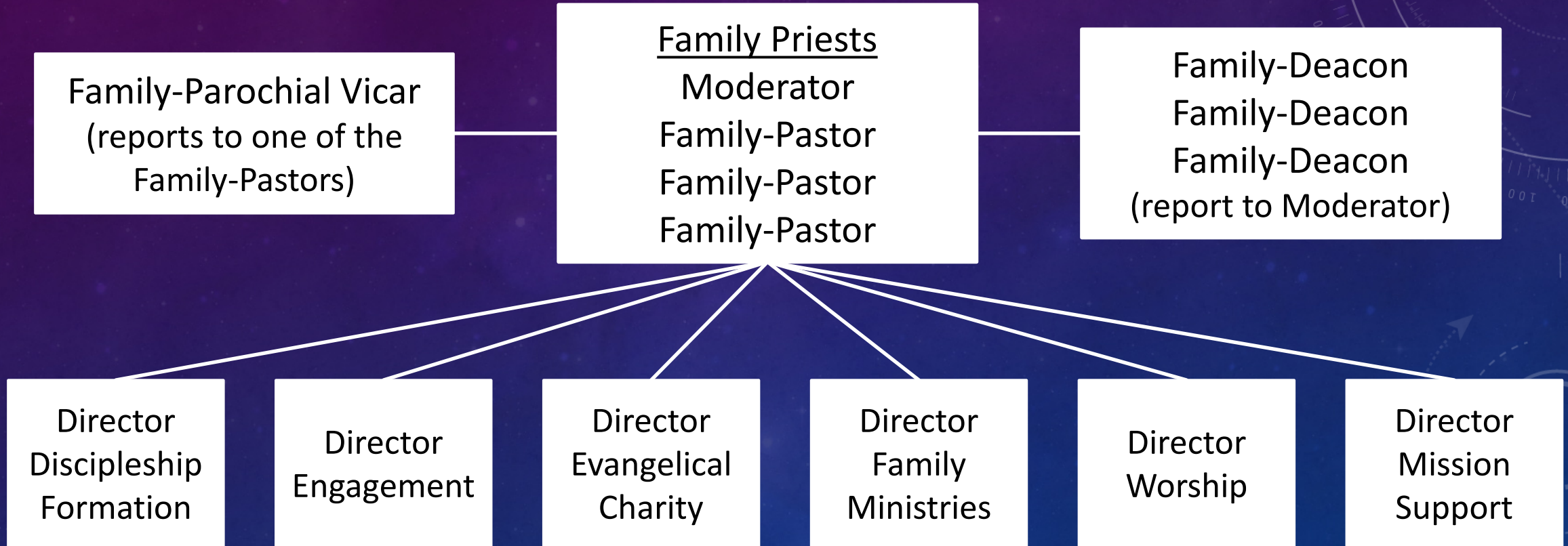
MISSION DIRECT

- Discipleship Formation
- Engagement
- Family Ministry
- Evangelical Charity
- Worship

MISSION SUPPORT

- IT
- Human Resources
- Finance
- Maintenance

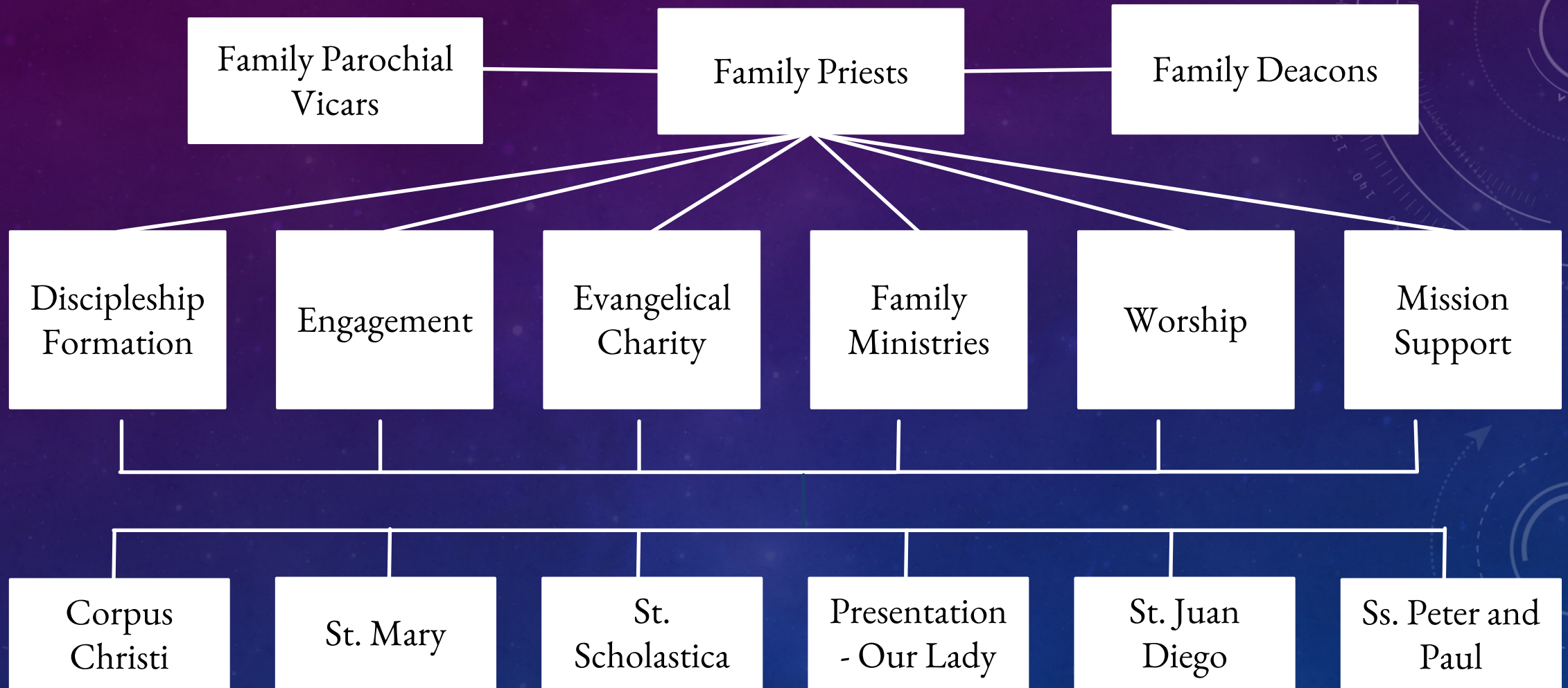
DIRECTORS SUPPORT FAMILY PASTORS; ARE SUPERVISED BY THE MODERATOR



DIRECTORS SERVE THE ENTIRE FAMILY

- They support all Family Pastors
- They are supervised by the Moderator

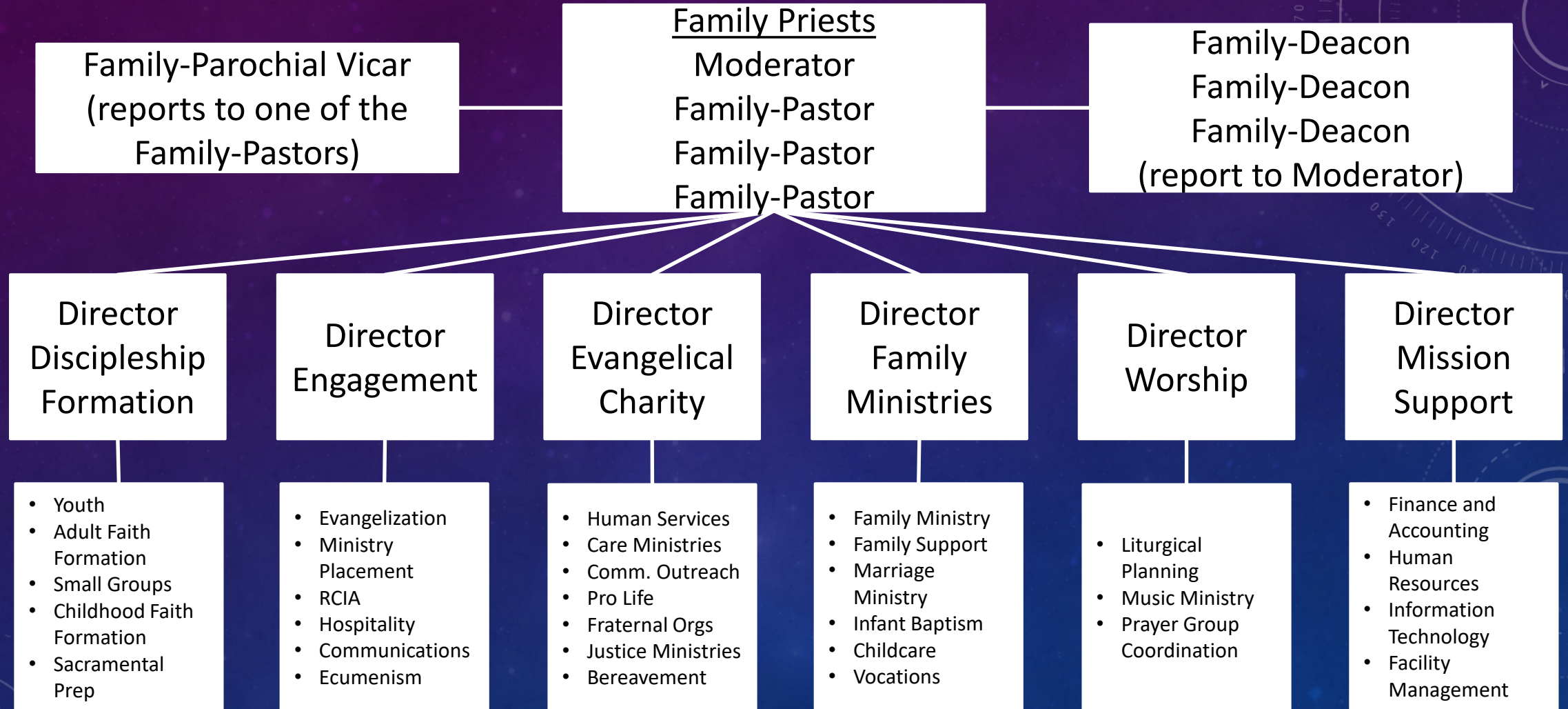
PARISHES ARE SERVED BY THE TEAM



MISSION DIRECT STRUCTURE

- FIRST LEVEL: DIRECTOR - Directors will oversee all functions and ministries associated with their particular areas of ministry.
- SECOND LEVEL: COORDINATOR - Coordinators will be responsible for overseeing ministries at the parish level. They will report to the Directors of their particular areas of ministry.
- THIRD LEVEL: SUBJECT MATTER EXPERT - Subject Matter Experts exercise specific ministries, e.g., catechists, lectors, etc. under the leadership of the Coordinator for their particular ministries.

COORDINATORS REPORT TO DIRECTORS



FAMILY LEADERSHIP TEAM (FLT)

- Required for every Family
- Selected by and reports to the Moderator
- Timing for FLT to be in place: no later than 12/31/21
- Parish Leadership Teams to be celebrated, then cease operations after FLT in place

Membership

- Moderator
- At least one Director from the Mission Direct Ministries, Mission Support Director
- May include Family-Pastors
- Other members based on critical talent or insight that is needed for success
- Should not be dominated by clergy

FAMILY PASTORAL COUNCIL (FPC)

- Required for every Family
- Selected by and reports to the Moderator
- Timing for FPC to be in place: no later than 12/31/21
- Parish Pastoral Councils to be celebrated, then cease operations after FPC is in place

Membership

- Moderator
- All priests in the Family
- Two parishioners from each parish in the Family
- Should be active in the life of their parish

FAMILY FINANCE TEAM (FFT)

- Required for every Family
- Reports to the Moderator
- Every parish in the Family must also have a Parish Finance Council

Membership

- Moderator
- Family Mission Support Director
- Two representatives from each parish in the Family
- Parish reps should be members of their respective Parish Finance Councils

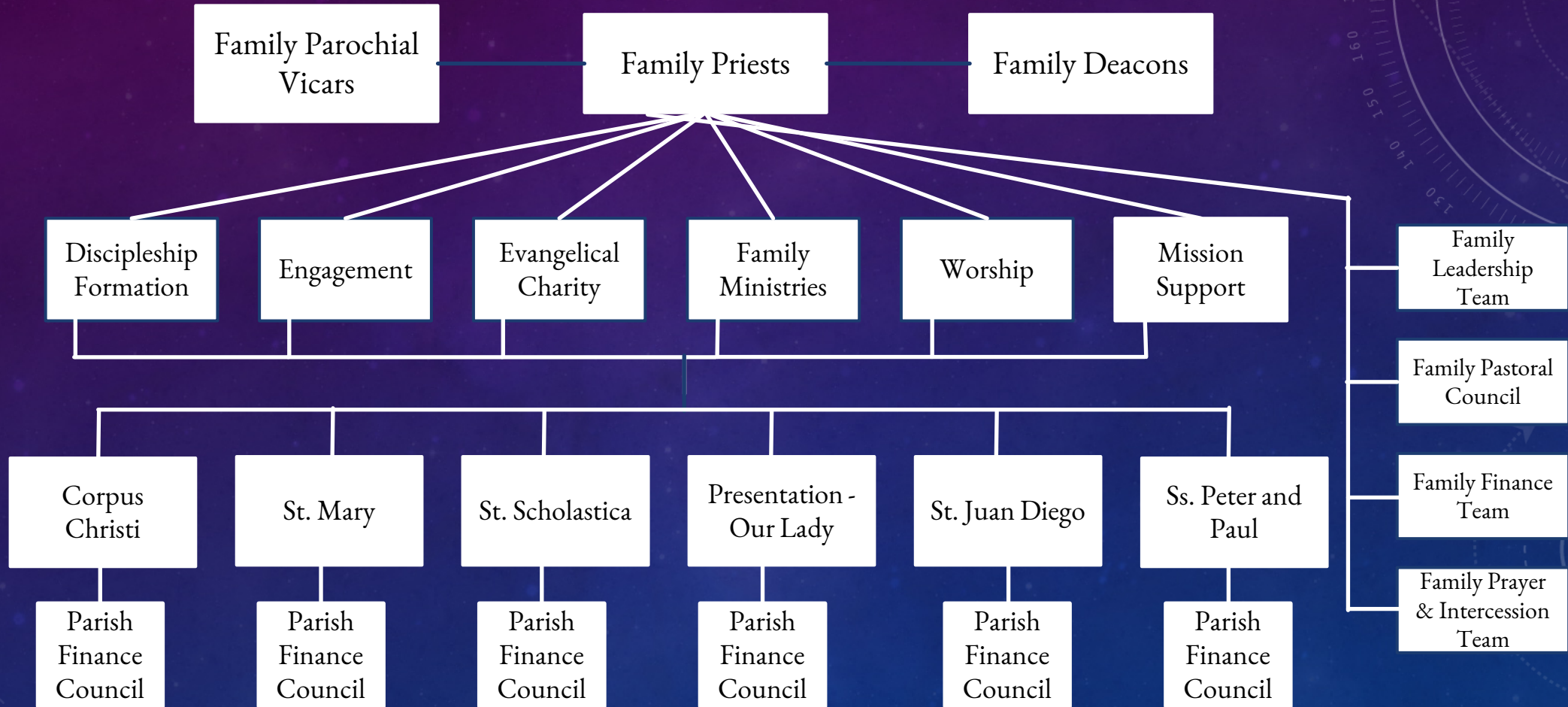
FAMILY PRAYER AND INTERCESSION TEAM (FPIT)

- Recommended for every Family

Membership

- At least one parishioner from each parish in the Family

ORGANIZING FOR MISSION



MISSION DIRECT IMPLEMENTATION TIMELINE

- Moderator and Priests confer about candidates for Director positions → Now – July 31
- Mission Support Director begins his/her work → Sept 1
- Staff (internal or external) to apply for positions → Aug 1 – Aug 20
- Interviews for Mission Direct Staff, if necessary → Aug 22 – Sept 17
- Moderator chooses 5 Mission Direct Directors, notifies candidates → Sept 20-24
- Mission Direct Directors begin their work → Oct 1
- Moderator works w/ Directors to establish each of these areas of ministry → Oct 1 – Dec 31
- Mission Direct teams established → Dec. 31st
- Working to implement full FOP mission direct alignment → Jan – June 2022

STAFFING PLAN – HIGH LEVEL OVERVIEW

- Moderator and Family Pastors identify internal candidates for director positions
- Family of parishes are authorized and empowered to manage all aspects of the hiring process in order to meet the needs of the family
- Directors assess internal staff resource needs for their internal family needs
- Moderator, in-conjunction with the family pastors, should collaboratively work together to recruit and hire personnel

A Few Minutes to Record Questions

The background is a dark blue gradient with a subtle pattern of white stars and faint technical diagrams. On the right side, there are several circular diagrams resembling gauges or dials with numerical scales (e.g., 100, 110, 120, 130, 140, 150, 160, 170, 180, 190, 200, 210) and arrows. There are also dashed lines and other circular elements scattered across the background.